

ALPINE ST5000 ELEVATOR

Single Temperature Glass Front Merchandiser

The ALL NEW Alpine ST5000 elevator is the latest version of USI's class leading glass front food & beverage merchandiser. This all new vending machine is designed to gently serve an even wider variety of prepackaged meals, sandwiches, salads, dairy, fresh fruit & beverages.



Shown in optional silver & black with Advanced Ergonomic Styling and optional kick panel.



- Energy efficient
- New elevator delivery system
- New styling & touch screen interface options
- American's with Disabilities Act compliant interface & product delivery
- Unmatched beverage options
- New motor pairing for wide packages
- Single & Dual Helix options
- 2 year warranty



ALPINE ST5000 ELEVATOR

Single Temperature Glass Front Merchandiser

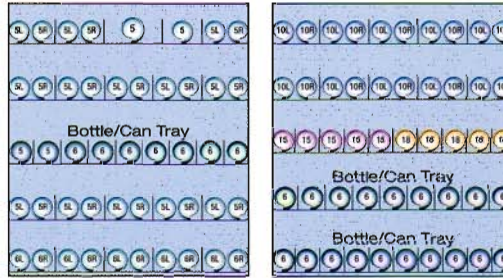


Shown in black with optional styling panels & kick panel.



Shown in silver with interface decal & kick panel.

Sample Configurations



Features

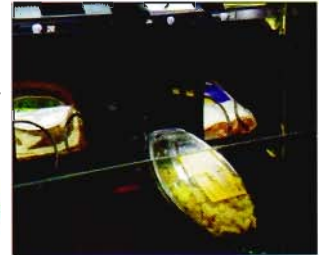
- **New optional touch screen interface**
 - Built-in, full color 7" LCD screen replaces traditional keypad & display
- **New attractive styling panel option**
- **American's with Disabilities Act Compliant**
- **Standard peripheral opening for additional payment or POS systems**
- **Standard lighted keypad with Braille identification**
- **MDB support for all industry standard devices including cash, coin, debit and credit systems**
- **DEX data output support**
- **Fully integrated controller with sales and accounting features:**
 - Price setting by selection, row or machine
 - Free vend and Combo vend modes
 - Flexible space to selection setting
 - Time of day discounting
 - Time of day shutdown modes for energy savings and controlled vend times
 - Programmable point of sale messages
 - Programmable coupon and token values
 - Coin and bill rejection rate counts
 - Accountability display by selection, row or machine
 - Talker device support for sight impaired
- **Motor Pairing**
- **Proven Operating Environment**
 - **High: 100°F (38°C) @ 90% RH**

Energy Efficient

- Uses less than 5.7 Kwh/day @ 75°F (24°C), 45% RH
- Low-E triple pane Argon filled door glass
- LED lighting
- Thickest foaming on the market with Eco-friendly zero ODP Ecomate® foaming process
- Balanced airflow design
- Energy saving programmable shutdown modes
- Eco-friendly refrigeration system

New Elevator Gently Delivers a Wide Range of Pre-Packaged Foods

Packaged Meals, Salads, Sandwiches, Juices, Carbonated Beverages, Fresh Fruit, Dairy Products Including Milk & Yogurt - More!!



LED Lighting

Enhances product presentation promoting more sales. No bulb servicing for 5 years. Energy efficient and eco-friendly.



Optional iCart Touch Screen Interface

Enhances consumer purchase experience. Communicates purchase information & messages to consumer.



Patented High Capacity Can Tray Option

Now has new live product display and holds up to 150-12oz. cans.



Versatile Steel Beverage Tray Option

Holds up to 60 canned or bottle beverages in 10 select or 9 select versions for wider product.



| Alpine ST5000 Elevator | |
|--------------------------------|----------------------------------------------------------------------------------------------------------------------------------------------------------------------------------------------------------------------|
| Selections | Up to 50 items |
| Capacity | Varies with tray configuration |
| Selection Pricing | Individual from \$0 to \$655.35 |
| Payment Systems | All Industry standard MDB compatible devices |
| Data Communication | DEX/UCS |
| Electrical Requirements | Domestic: 115 VAC/60Hz, 10 AMPS International: 230 VAC/50Hz, 5 AMPS; With Heated Glass: 115 VAC/60Hz, 11 AMPS International: 230 VAC/50Hz, 5.5 AMPS |
| Refrigeration | Super 1/3 HP, R134a Closed System |
| Dimensions | Height 72" (183 cm) Width 41" (104 cm) Depth 38" (97 cm) |
| Shipping Weight | *975 lbs. (442 kg) *Varies with tray configuration |
| Standard Features | GVC2 Controller, LED Lighting, iVend® Sensor System, Motor Pairing, Can & Bottle Trays, Heated Glass |
| Options | Styling Panels, iCart Touch screen Interface, inDEX Tool, 9 Select Can/Bottle Tray, High Capacity Can Tray, Dual Helix, inDEX Tool, Custom Helix and Tray Configurations, Custom Colors, Custom Graphics, Kick Panel |



In order to bring you the best products possible, we continue to improve product design and performance and as such specifications are subject to change without notice.



A Wittern Group Company

U-Select-It
8040 University Boulevard
Des Moines, Iowa 50325
1-800-247-8709
Fax: 515-274-0390
www.uselectit.com

